



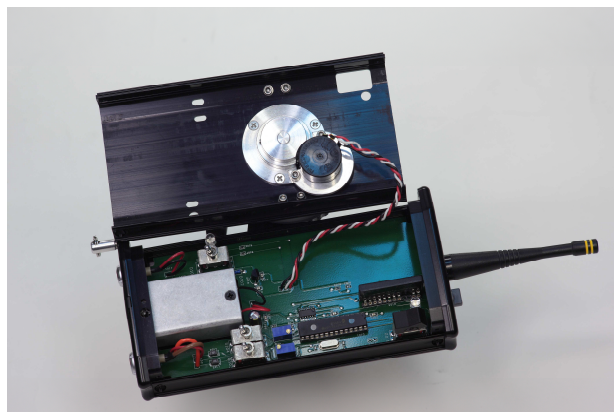
**PLC** Electronic Solutions Ltd.  
Making it Possible

## BarTech Iris Slider Upgrade Installation

### Tools Needed to Start

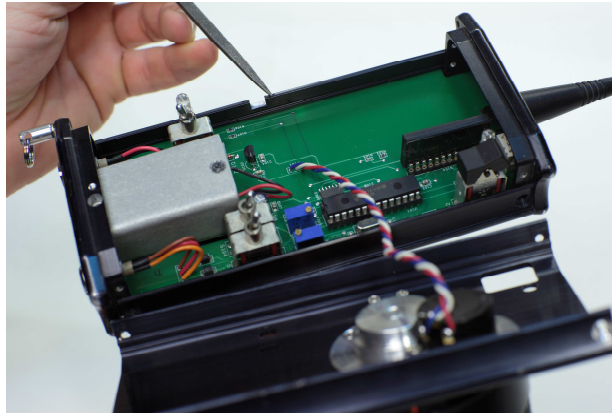
- 1 \* Phillips screwdriver
- 1 \* File
- 1 \* Small standard screwdriver or chip puller

1. Remove the 9-volt battery from the **BarTech BFD Handset**.
2. Peel off the rubber grips on the sides of the **BarTech BFD Handset**; they are just pressure fit in. Remove all 4 of the screws from the left side of the case and the upper screws from the right side of the case and lift the front of the case off (antenna at the top).



3. File a slot into the lower portion of the case as shown.

**Note: Keep track of the file shavings and make sure all are removed from the inside of the case. Put a cloth over the PCB to collect the shavings.**



4. Carefully remove the IC U101 by gently prying it up on one end at a time.



5. Carefully install the **BarTech Iris Slider PCB** as shown below into the IC connector of U101. **Note: Board may not be exactly as shown.**



**6. Choosing 12 or 16 bit mode.**

- 12 bit mode allows the system to work with all **BarTech Analog Focus Receivers** and all **fSTOP Wireless BarTech Digital Receivers**.
- 16 bit mode works with the **fSTOP Wireless BarTech Digital Receiver** with software version 3.1 and newer.

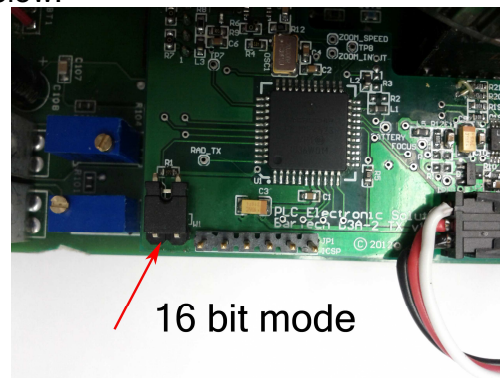
**NOT For Analog Systems.**

**NEW - High Resolution 16bit Control for increased accuracy and smoother lens operation**

Now you can also benefit from the increased resolution that is **16 times more accurate** in positioning than existing 12 bit resolution systems.

12 bits = 4096 steps / **16 bits = 65535 steps**

To choose 16 bit mode, place the black jumper on the connector W1 of the Slider Adaptor Board as shown on the pictures below.



- 7. Close the case with the Slider wire coming out of the hole you filed into the case. When closing the case please make sure that the wires are routed out of the way of the knob potentiometer or any other obstruction.**



8. Place the Slider on the side of the **BarTech BFD Handset** with the slider stopper at the top as shown.



9. Screw in the 4 provided screws to fasten down the Slider. Install the screws and rubber strip into the other side of the unit to complete the assembly. You should have 4 small screws, 1 IC and a rubber strip left over.



10. Install the 9-volt battery into the BarTech BFD Handset.

### 11. Calibration

- To calibrate the **BarTech Iris Slider** and **Focus knob** make sure that all of the switches are in the down position on the BarTech Handset. I.e. Power is OFF, Motor Direction is in REV, Camera is in CON, and Camera Run/Stop is in STOP.
- Switch on the Power switch.
- Now switch up all of the other switches. When this is completed both the Power and Camera Run/Stop LED's should start rapidly flashing.
- Slide the **BarTech Iris Slider** all the way from one end to the other a few times.
- Rotate the **Focus knob** all the way from one end to the other a few times.
- Move all of the switches but the Power switch into the down position. The Power and Camera Run/Stop LED's will stop rapidly flashing which indicates that the calibration is complete.