



PLC Electronic Solutions Ltd.

Range Extender for Red Epic™ Installation Instructions



1. Required Tools (not included in kit)

- 1 x T5 Torx screwdriver
- 1 x PH0 Phillips screwdriver (small)
- 1 x 3/16" Hex driver (for the Top Plate)
- 1 x 3MM Hex driver (for the Top Plate)



2. Power

Ensure that the Red Epic™ camera is powered down and the battery has been removed.

Caution:
Never remove the antenna while the Red Epic™ camera is powered up.

3. Top Plate

Remove any top plate from the Red Epic™ camera to expose the top of the camera body.



4. Red Link Cover

Carefully remove the plastic Red Link cover on top of the Red Epic™ camera by lifting the backside of the cover.



5. Access to the Antenna Board

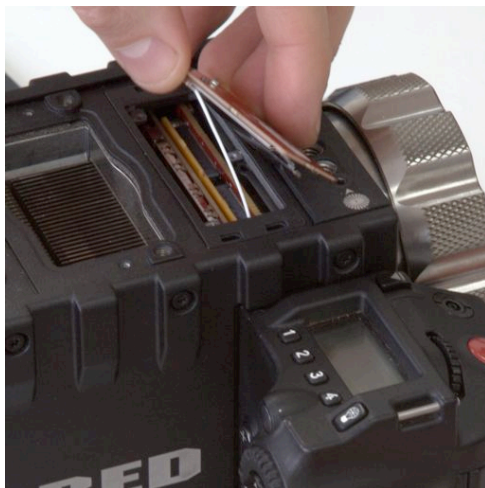
Remove the 3 screws securing the Antenna board by using the T5 Torx screwdriver.



Lift up the Antenna board and carefully unplug the U.FL Antenna connector cable from the Antenna board.



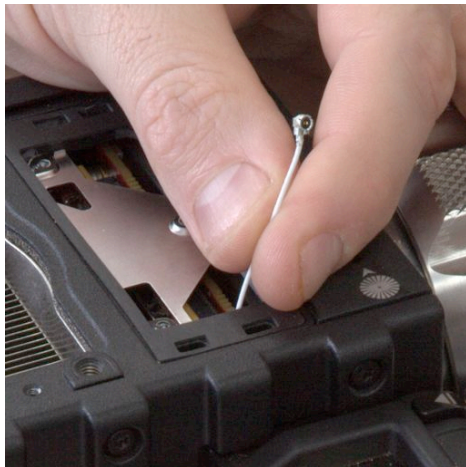
Remove the cable by **pulling gently on the metal connector**
NOT the cable.





Reposition the U.FL Antenna cable to the right side of the metal plate.

Re-install the metal plate ensuring that the U.FL Antenna cable connector is above the metal plate.



6. Connecting the Red Epic™ Range Extender

Connect Range Extender by very carefully connecting the U.FL Antenna connector cable to the matching connector on the Red Epic™ Range Extender.



Attach the Range Extender for Red Epic™ using the screws provided with the kit using a small (PH0) Phillips screwdriver.

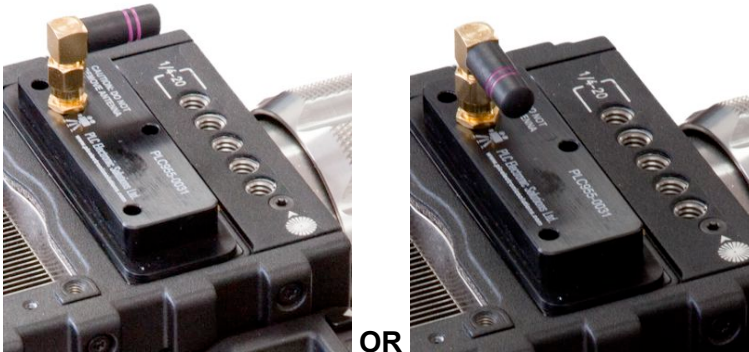
CAUTION: Do not over tighten the screws as you may strip the threads in the camera





7. Attaching the Range Extender Antenna

Attach and orient the antenna in your preferred position.



8. Attach Top Plate

Secure top plate.

Install battery.



Caution:
Never power up the Red Epic™ camera while the antenna is removed



PLC Electronic Solutions Ltd.

#9 – 3871 North Fraser Way
Burnaby BC Burnaby Canada V5J 5G6
(604) 708-3502 (877) 832-3476 -Toll Free

www.plcelectronicsolutions.com